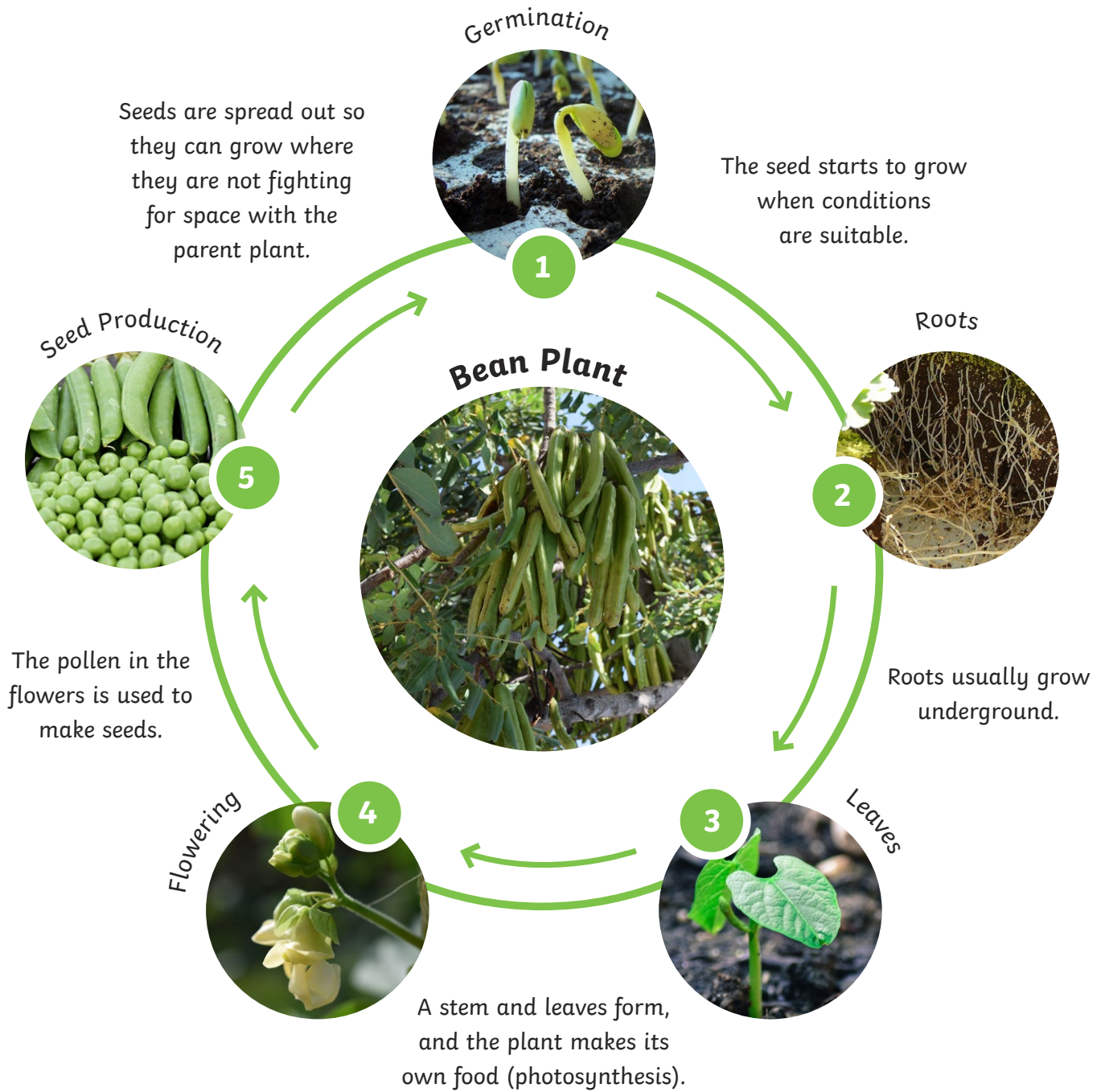


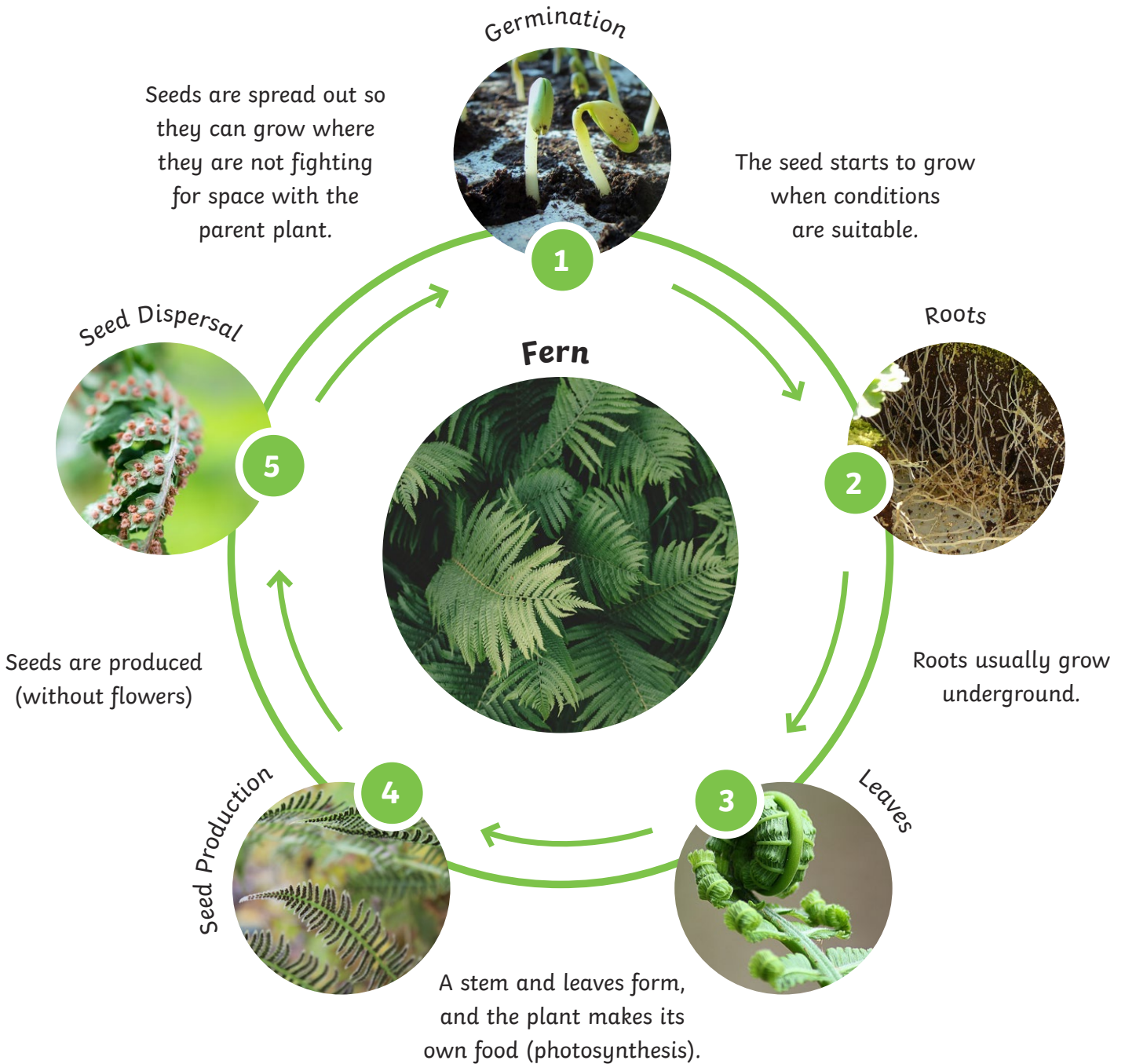
# The Flowering Plant Life Cycle



## Other Flowering Plants



# The Non-Flowering Plant Life Cycle



## Other Non-Flowering Plants

Conifer



Ginkgo



Cycad



# The Bird Life Cycle

Egg



1

Eggs are laid by the mother. They care for the egg until it hatches.

**Chicken**



Independent adults seek the company of the opposite sex and mates.

Chick



2

The young bird is fed until it is old enough to find its own food.

Adult



3

## Other Birds

Ostrich



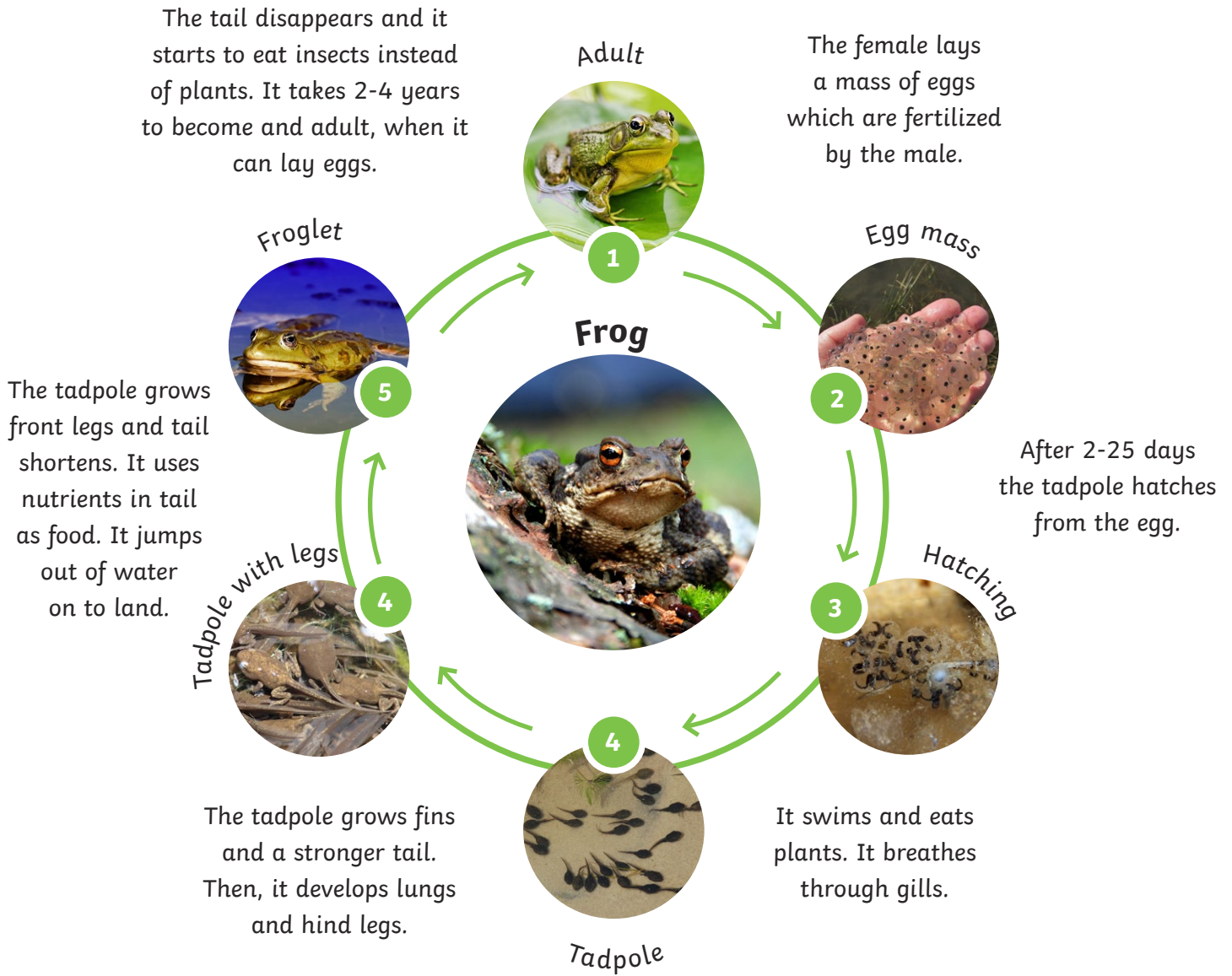
Penguin



Eagle



# The Amphibian Life Cycle



## Other Amphibians

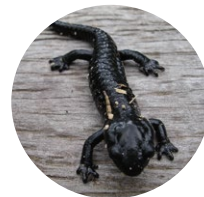
Salamander



Toad

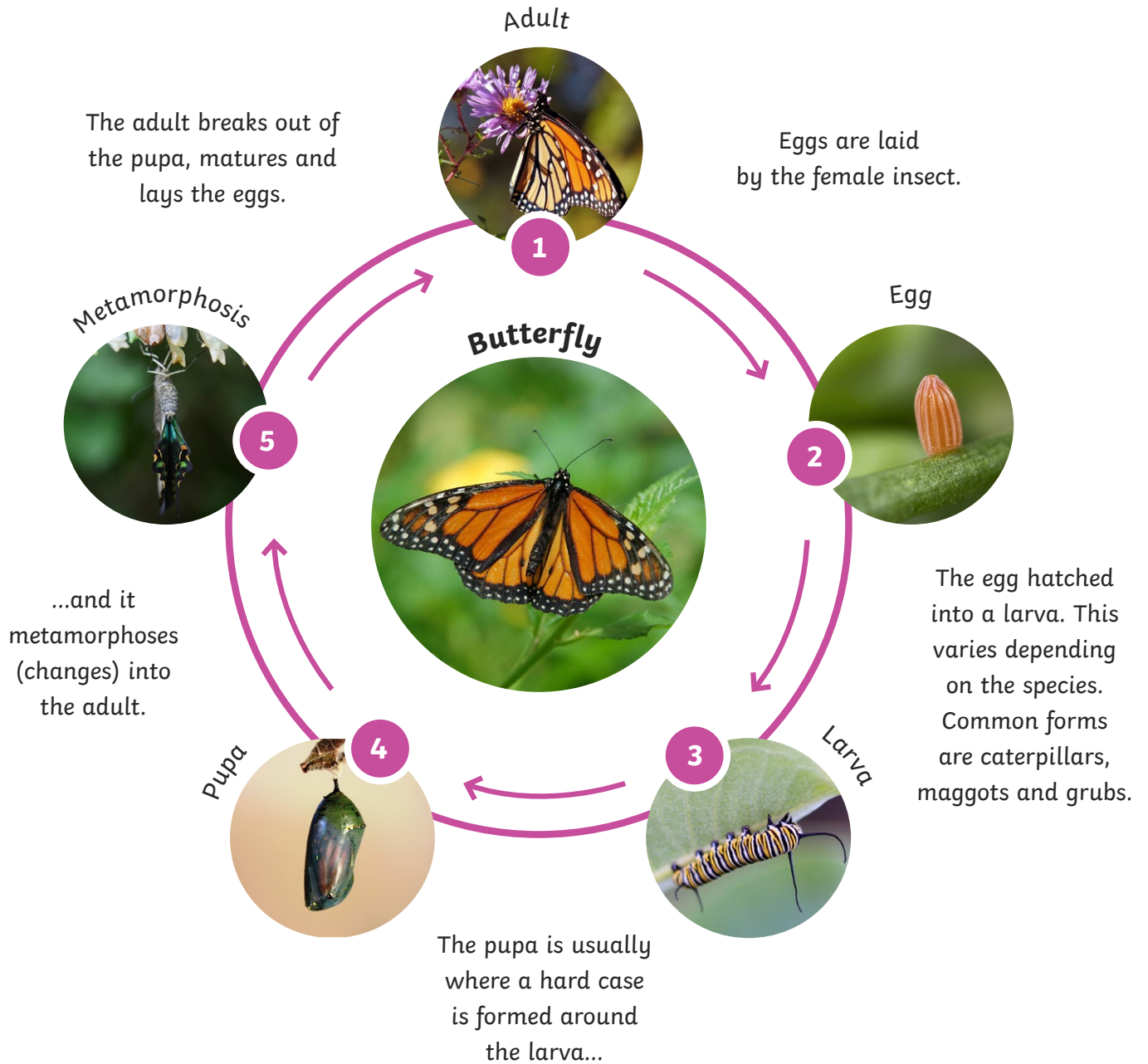


Newt



# The Insect Life Cycle

## Complete Metamorphosis

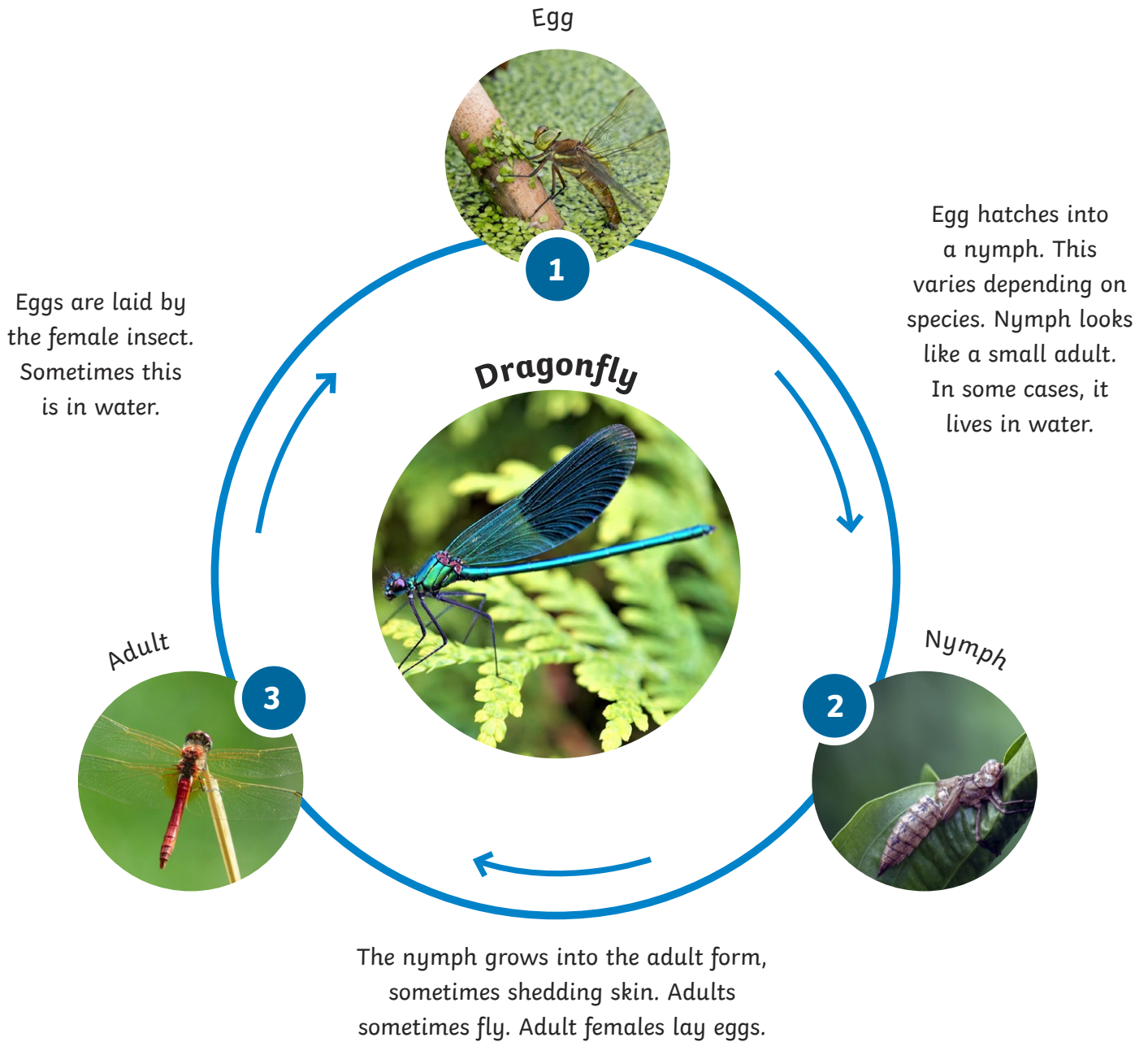


## Other Insects that Complete Metamorphosis



# The Insect Life Cycle

## Incomplete Metamorphosis

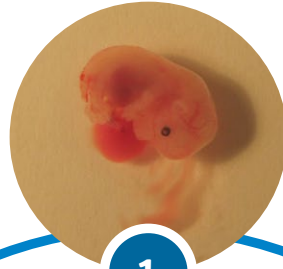


### Other Insects that Undergo Incomplete Metamorphosis



# The Mammal Cycle

Embryo



1

Embryos grow inside the mother, where it is completely reliant upon the mother.

Dogs

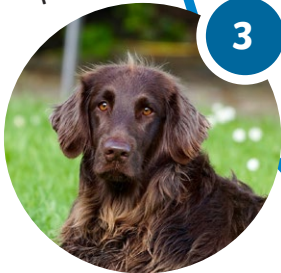


Young



2

Adult



3

Independent adult usually seeks company from the opposite sex and mates. Adult female nurses their young.

Main period of growth and developing independence from other parents.

## Other Mammals

Dolphin



Elephant



Human

